



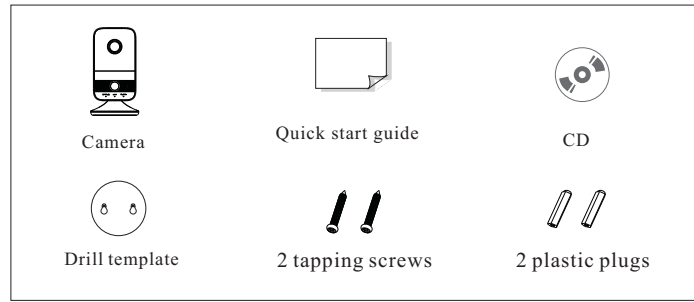
Network Camera Quick Start Guide

- Please read this instruction carefully before using the product and keep it for further reference.
- All the examples and pictures used here are for reference only.
- The contents of this manual are subject to change without notice.

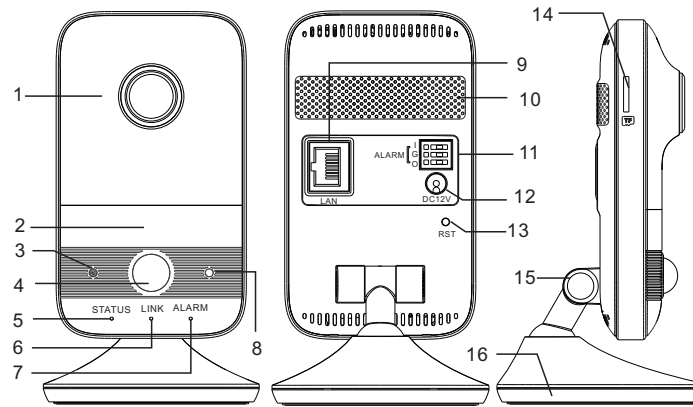
1 Warning and Caution

- If the product does not work properly, please contact your dealer or the nearest service center. Never attempt to disassemble the camera yourself. (We shall not be responsible for any problems caused by unauthorized repair or maintenance.)
- Keep away from liquid while in use.
- In the use of the product, you must be strict compliance with the electrical safety regulations of the nation and region. When the product is mounted on wall, the device shall be firmly fixed.
- Do not use camera beyond specified voltage range.
- Do not drop the camera or subject it to physical shock.
- Avoid touching the camera lens.
- If cleaning is necessary, please use clean cloth to wipe it gently. If the device will not be used for a long time, please cover the lens cap to protect the device from dirt.
- Do not aim the camera at the sun or extra bright place.
- Do not place the camera in extremely hot, cold (the operating temperature shall be -10°C~45°C), dusty or damp locations, and do not expose it to high electromagnetic radiation.
- To avoid heat accumulation, good ventilation is required for operating environment.

2 Package



3 Overview



1	Lens	9	Ethernet connector & PoE
2	IR LED (ON: visible)	10	Speaker
3	Microphone	11	Alarm I/G/O
4	PIR (Passive Infrared) sensor	12	Power connector
5	Power indicator	13	Reset or WPS
6	Network indicator	14	Micro SD card slot
7	Alarm indicator	15	3-axis bracket
8	Light sensing	16	Mounting base

● Alarm Connections:

I: Alarm input interface; O: Alarm output interface; G: Grounding
 Alarm input: Connect the cables of the sensor to I and G interfaces.
 Alarm output: Connect the cables of the alarm output device to O and G interfaces.

● Indicators

Power indicator: Green: the camera is started successfully.
 Network indicator: Flashing blue: the camera is connected to the wired network successfully.

Alarm indicator: Red: alarms are triggered.

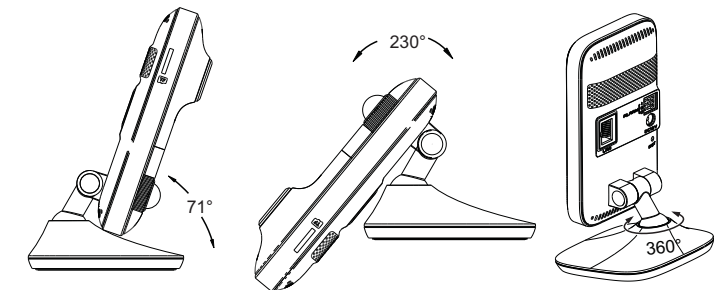
● Reset

Press RST about 10s when the camera is powered on to restore the default settings.

● WPS

WPS (Wi-Fi Protected Setup): Press the WPS button on the router and then press the RST button on the camera within 120s to quickly connect the Wi-Fi. Pressing the RST button on the camera and then pressing the WPS button on the router will work as well. The red alarm indicator will flash if the Wi-Fi is connected.

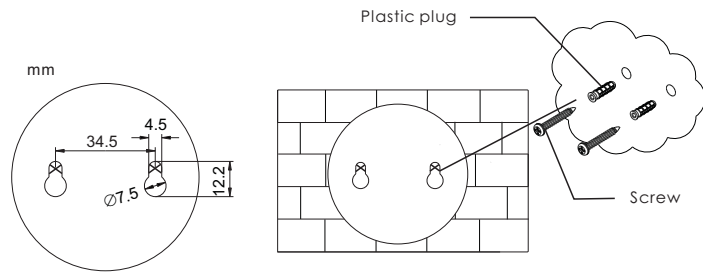
● 3-axis Bracket Adjustment



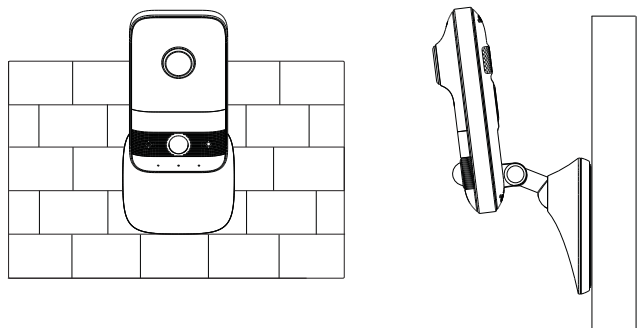
4 Installation

The camera can be placed on the desktop or installed on the wall. Please make sure the wall is strong enough to withstand 3 times the weight of the camera. The steps of wall mounting are as follows.

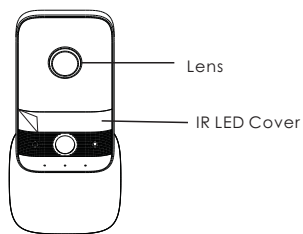
- ① Attach the drill template to the place where you want to fix the camera. Then drill the screw holes on the wall according to the drill template.
- ② Peel off the drill template and then insert the plastic plugs and screws into the screw holes. Please leave a little clearance between the wall and the screws.



- ③ Route and connect the cables.
- ④ Hook the mounting base to the screws and ensure that the camera is fixed firmly. Then adjust the angle of the bracket.

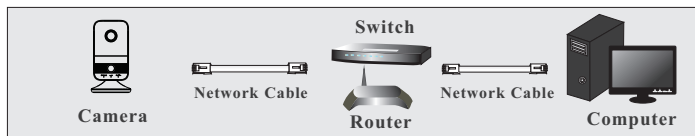


- ⑤ Remove the protection films of the lens and the IR LED cover.

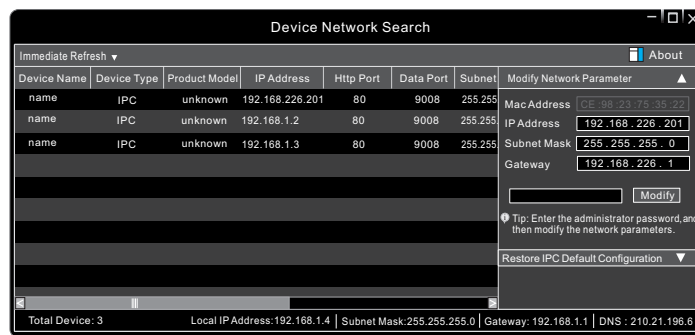


5 Network Connection

● Access the Camera Through the Wired Network



- ① Make sure that the camera and the PC are connected via LAN.
- ② Find the IP-Tool from the CD and then install it in the computer. After that, run the IP-Tool as shown below.



- ③ Modify the IP address. The default IP address of this camera is 192.168.226.201. Click the information of the camera listed in the above table to show the network information on the right hand. Modify the IP address and gateway of the camera and make sure its network address is in the same local network segment as the computer's. Please modify the IP address of your device according to the practical situation. After modification, please enter the password of the administrator and click "Modify" button to modify the setting.

⚠ The default password of the administrator is "123456".

- ④ Double-click the IP address listed in the IP-Tool or manually enter the IP address in the address bar of the web browser to connect the camera. Then follow directions to download and install the applicable plug-in. After that, enter the user name and password in the login interface.

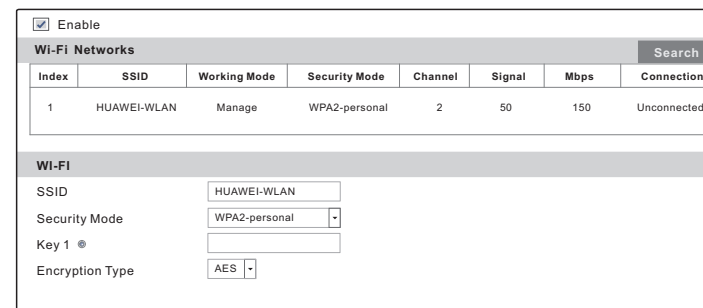
⚠ The default username is *admin*; the default password is *123456*.

● Access the Camera Through Wi-Fi

A: You can quickly connect Wi-Fi through WPS function (See 3 Overview--WPS for more details).

B: You can also follow the steps below to connect Wi-Fi.

- ① Connect the camera to the LAN through the network cable.
- ② Run the IP-Tool and then find the IP address of the camera. The default IP address of this camera is 192.168.226.201. Double click it. This will bring you to the login interface of the camera. Enter the default username and password to log in.
- ③ Click "Config" → "Network" → "WIFI" to go to the following interface.



- ④ Enable WIFI and click "Search" to search wireless routers. Select the desired router, enter the key number and select encryption type. After that, select "Obtain an IP address automatically" or manually enter the IP address by clicking "Use the following IP address".
- ⑤ Pull the network cable out of the camera.
- ⑥ Run the IP-Tool and find the camera through IP address or MAC address. Then double click it listed in the IP-Tool or enter the IP address of the camera in the address bar of the web browser to access the camera.